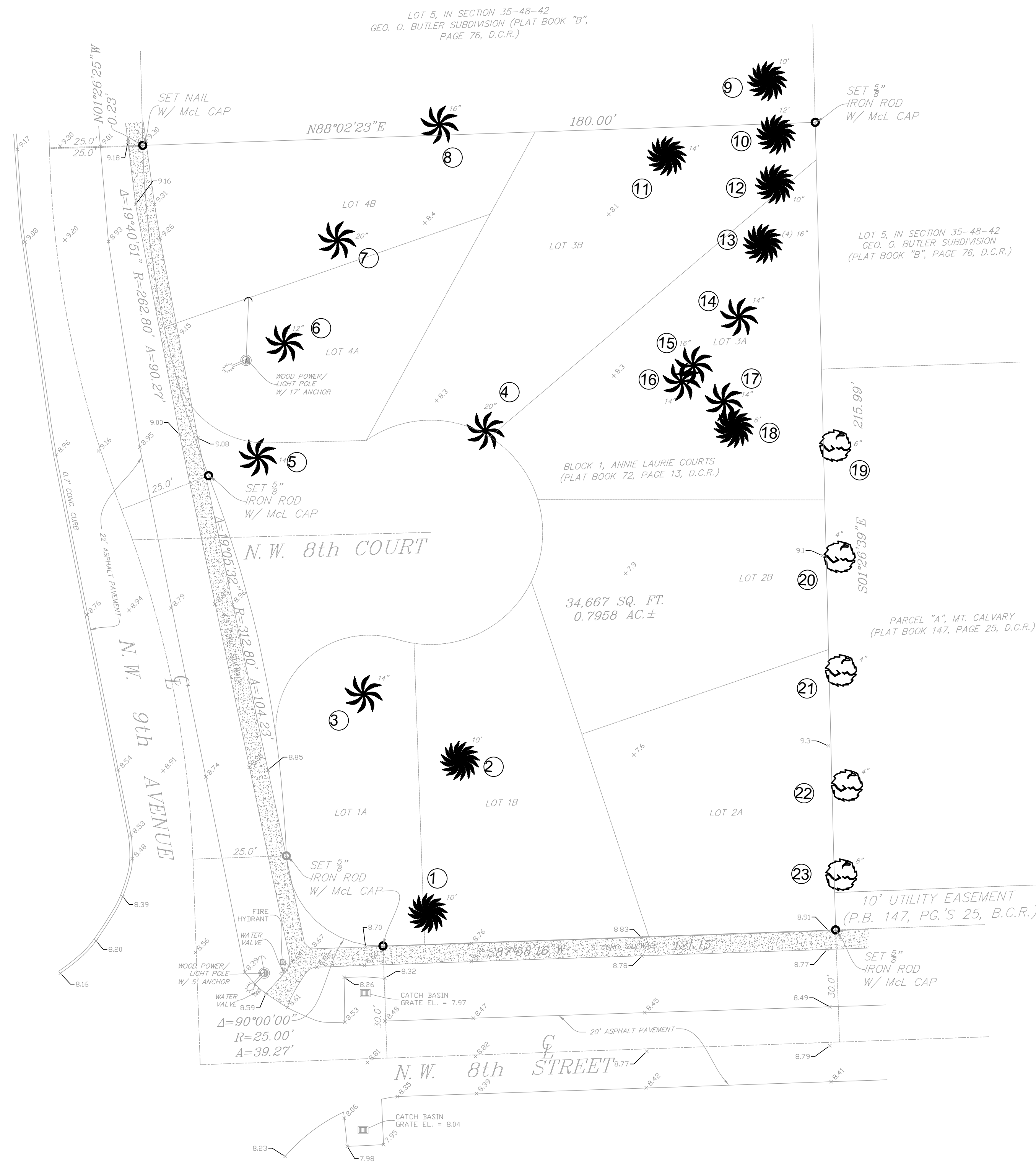


Wayne
Tonning

Digitally signed
by Wayne
Tonning
Date: 2021.06.01
21:25:27 -04'00'



820 NW 9th AVENUE — Pompano Beach, Florida									
Tree #	Type	DBH	Height	Canopy	Disposition			Condition	Mitigation
					Remove	Remain	Relocate		
1	Sabal Palm	10"	15'	100 SF			x	Fair/Good	
2	Sabal Palm	10"	15'	100 SF			x	Fair/Good	
3	Sabal Palm	14"	25'	100 SF			x	Fair/Good	
4	Sabal Palm	20"	20'	100 SF			x	Fair/Good	
5	Sabal Palm	14"	20'	100 SF			x	Fair/Good	
6	Sabal Palm	12"	20'	100 SF			x	Fair/Good	
7	Sabal Palm	20"	20'	100 SF			x	Fair/Good	
8	Sabal Palm	16"	15'	100 SF		x		Fair/Good	
9	Sabal Palm	10"	20'	100 SF		x		Fair/Good	
10	Sabal Palm	12"	15'	100 SF			x	Fair/Good	
11	Sabal Palm	14"	20'	100 SF			x	Fair/Good	
12	Sabal Palm	10"	20'	100 SF			x	Fair/Good	
13	Sabal Palm	16"	20'	100 SF			x	Fair/Good	
14	Sabal Palm	14"	20'	100 SF			x	Fair/Good	
15	Sabal Palm	16"	20'	100 SF			x	Fair/Good	
16	Sabal Palm	14"	20'	100 SF			x	Fair/Good	
17	Sabal Palm	14"	20'	100 SF			x	Fair/Good	
18	Sabal Palm	6"	20'	100 SF			x	Fair/Good	
19	Live Oak	8"	20'	450 SF		x		Fair/Good	
20	Live Oak	8"	20'	450 SF		x		Fair/Good	
21	Live Oak	8"	20'	450 SF		x		Fair/Good	
22	Live Oak	8"	20'	450 SF		x		Fair/Good	
23	Live Oak	8"	20'	450 SF		x		Fair/Good	



TREE DISPOSITION PLAN

DRC

PZ21-12000005
7/7/2021

DRWG. TITLE : EXISTING TREE SURVEY DISPOSITION

PROJECT : RENTAL APARTMENTS
820 NW 9th AVENUE
POMPAÑO BEACH, FLORIDA

CLIENT : BELLON ARCHITECTURE

PROJECT NO. 20-127

DRAWN BY WKT

DESIGNED BY WKT

CHECKED BY WKT

DATE : 10-12-20

DWG. NO. LE-1

SHT. NO. 1 of 1

REVISION :

TONNING & ASSOCIATES, INC.
Landscape Architecture & Land Planning

Landscape Architect — Florida License #6666709
4855 NW 92 Terrace
Coral Springs, Florida 33067
Tel. 561-414-8269 Email: wtonning@tonningandassociates.com